

The background features a dark blue gradient with faint, light blue circular patterns and numbers. These patterns include concentric circles, arcs, and dashed lines, some with arrows indicating a clockwise direction. Numbers like 150, 160, 170, 180, 190, 200, 210, 220, 230, 240, 250, and 260 are visible along some of the circular paths.

RIPPONLEA PRIMARY SCHOOL

WELCOME TO FOUNDATION 2024

ACKNOWLEDGMENT OF COUNTRY

I begin this session by acknowledging the traditional custodians of the land the Boon Wurrung people. The land on which our students learn, live and play and where we gather today.

I wish to acknowledge and demonstrate our collective respect for their elders, past, and present and for their continuing cultures and the contributions they make to the life of our community, both now and in the past.

I also extend that respect to Aboriginal and Torres Strait Islander people here with us today.



WELCOME MESSAGE FROM PRINCIPAL NATALIE ROSE

KEY FOUNDATION 2024 'STEPPING UP' DATES		
Student Sessions 1, 2, and 3	Thursday 2/11 Thursday 9/11 Thursday 16/11	9:30 am -10:30 am 2.00 pm -3:00 pm 2.00 pm -3:00 pm
Final Session	Friday 24/11	11:30am – 1:00pm
Parent Information Workshops	Thursday 2/11 Thursday 9/11 Thursday 16/11 Friday 24/11	9:30 am -10:30 am 2.00 pm -3:00 pm 2.00 pm -3:00 pm 11:30 am - 12:30pm
Eduthreads	Thursday 16 th	In the Barrbunin for all fittings



OUR VISION IS FOR THE CHILDREN OF RIPPONLEA TO BE
CRITICAL AND **CREATIVE** THINKERS WHO ARE
EMPOWERED WITH THE **SKILLS** AND **EMPATHY** TO
ENGAGE WITH AN EVER-CHANGING WORLD.

THEY *CARE*, THEY *CREATE*, THEY *CONNECT*.

OUR VALUES

- **Community**
We work cooperatively in a team and make sure no one is left out. We take pride in our environment and support each other in the tasks that need to be done.
- **Creativity**
We imagine, think creatively, share our ideas with others, and try new things.
- **Integrity**
We do what is right even when no one is looking. We are honest even when there might be consequences.
- **Open Mindedness**
We know, accept and value that everyone is different. We share ideas, listen to and respect everyone's opinions
- **Resilience**
We know that life can be challenging. We have a go even when it is hard. We bounce back from things that hurt and disappoint us, and learn from our mistakes.
- **Respect**
We consider the rights of others and accept our differences. We take care of our environment and equipment.

IN THIS SCHOOL

- We do kindness
- We do lots of chances
- We do real
- We do mistakes
- We do I'm sorry
- We do laughter
- We are grateful and show our love
- We are all about relationships



RPS IS AN INCLUSIVE CHILD-SAFE SCHOOL

Ripponlea Primary School is a child-safe school which welcomes all children, young people and their families. Everyone in our community has a moral responsibility to keep children safe and to protect them from harm and abuse.

We have made a commitment which helps to raise awareness about the importance of child safety at Ripponlea Primary School (RPS) and affirms the council's commitment to a child-safe culture and expectations.

Statement of Commitment to Child Safety

- RPS is committed to the safety, rights and well-being of all children and young people. This will be the primary focus of our care and decision-making. The participation and empowerment of children is fundamental to our work.

In recognition of the increased vulnerabilities of particular groups of children, we will pay particular attention to:

- the cultural safety of Aboriginal children
- the safety of children from culturally and/or linguistically diverse backgrounds
- the cultural safety of international students
- the safety of children with a disability
- the safety of children and young people who identify as lesbian, gay, bisexual, trans and gender diverse, intersex and queer (LGBTIQ+) and other students experiencing risk or vulnerability
- the safety of children in out-of-home care or youth justice (those unable to live at home)

Inappropriate or harmful behaviour targeting students based on these or other characteristics, such as racism or homophobia, are NOT tolerated at our school, and any instances identified will be addressed with appropriate consequences. Ripponlea Primary School has **ZERO** tolerance for child abuse. We value diversity and will not tolerate discriminatory practices.

Victoria's new Child Safe Standards

Child Safe Standard 1 – Organisations establish a culturally safe environment in which the diverse and unique identities and experiences of Aboriginal children and young people are respected and valued

Child Safe Standard 2 – Child safety and wellbeing is embedded in organisational leadership, governance and culture

Child Safe Standard 3 – Children and young people are empowered about their rights, participate in decisions affecting them and are taken seriously

Child Safe Standard 4 – Families and communities are informed, and involved in promoting child safety and wellbeing

Child Safe Standard 5 – Equity is upheld and diverse needs respected in policy and practice

Child Safe Standard 6 – People working with children and young people are suitable and supported to reflect child safety and wellbeing values in practice

Child Safe Standard 7 – Processes for complaints and concerns are child focused

Child Safe Standard 8 – Staff and volunteers are equipped with the knowledge, skills and awareness to keep children and young people safe through ongoing education and training

Child Safe Standard 9 – Physical and online environments promote safety and wellbeing while minimising the opportunity for children and young people to be harmed

Child Safe Standard 10 – Implementation of the Child Safe Standards is regularly reviewed and improved

Child Safe Standard 11 – Policies and procedures document how the organisation is safe for children and young people

*The Child Safe Standards are reflected for a school's context in Ministerial Order 1359

CHILD SAFE CHAMPIONS

WHO CAN I TALK TO IF I'M FEELING UNSAFE OR HAVE A CONCERN?

OUR CLASSROOM
TEACHER



ANY ADULT AT
OUR SCHOOL



MS ROSE OUR
PRINCIPAL

MS CAMPBELL
OUR ASSISTANT
PRINCIPAL




SARAH OUR
SEWB LEADER

KATE OUR CHILD
SAFE CHAMPION



WE ARE ALL HERE TO HELP YOU



INTRODUCING THE 2024 FOUNDATION TEACHING TEAM



Stef
Hoffner



Matthew
Blake

OUR ROLES AT RPS



Natalie Rose
PRINCIPAL



Marta Campbell
ASSISTANT PRINCIPAL



Kate Crawford
**BUSINESS
MANAGER**



Casey Trotter
**ADMINISTRATION
OFFICER**



2023



Furneaux House
Captains
Principal
Natalie Rose



Ripponlea Primary
2023



L to R: Molly Burnett, Mahmoud Elsaleh, Olive Valk.

Ripponlea Primary School
2023



Staff: Sarah Coughlin, Brenton O'Hoy, Alicia Oliver-Cook, Natalie Rose,
L to R: Daghdha Hamill, Harriet Muihail, Maevy Leyden, Audrey Burdwan, Aurora Mellios, Dia Allen,
L to R: Lily Hart, Olive Valk, Pip Tansy, Richmond Eichen, Fraser Vale, Amelia Dixon,
Sophie Archer, Sophie Peacock-Miller, Lari Bayle, Lennie Szpino, Mia D
Rodriguez, Zoe Buxton, James Evans, Tosca Saracino, Molly B

Ripponlea Primary School
2023



R. Aurora Mellios, Amelia Dixon.

STUDENT LEADERS

OUT-OF-SCHOOL-HOURS CARE – THEIR CARE



TheiCare
Where Kids love to be!

<https://youtu.be/3f9wElt-eug>

HOME-SCHOOL COMMUNICATION



COMPASS
School Manager



Seesaw



A DAY IN THE LIFE OF A
FOUNDATION STUDENT
AT RIPPONLEA PRIMARY

WHAT DOES A TYPICAL SCHOOL DAY LOOK LIKE?

BELL TIMES

8.45AM

9.00AM

10.00AM

11.00AM

11.30PM

12:30 PM

1.30PM

2:30PM

3.30PM

3.45PM



WHAT DOES A TYPICAL SCHOOL DAY LOOK LIKE?

BELL TIMES

8.45AM

9.00AM

10.00AM

11.00AM

11.30PM

12:30 PM

1.30PM

2:30PM

3.30PM

3.45PM



8.45 am

Students enter the yard and assemble in their class groups.

Foundation students will have exclusive access via the big gate between the oval and the kindergarten. Students go directly into their classrooms for developmental play.

WHAT DOES A TYPICAL SCHOOL DAY LOOK LIKE?

BELL TIMES

8.45AM

9.00AM

10.00AM

11:00AM

11.30PM

12:30 PM

1.30PM

2:30PM

3.30PM

3.45PM



9:00 am

The first learning session begins.

Teachers take the roll, conduct a circle time activity and begin the literacy block of reading, writing, speaking & listening.

WHAT DOES A TYPICAL SCHOOL DAY LOOK LIKE?

BELL TIMES

8.45AM

9.00AM

10.00AM

11:00AM

11.30PM

12:30 PM

1.30PM

2:30PM

3.30PM

3.45PM



10.00 am

The transition between literacy and numeracy allows for a healthy fruit/vegetable, brain and movement break.

WHAT DOES A TYPICAL SCHOOL DAY LOOK LIKE?

BELL TIMES

8.45AM

9.00AM

10.40AM

11.10AM

12.50PM

1.00PM

1.50PM

3.30PM

3.45PM



11:00 am

Recess

While older students will take their snacks outside, Foundation students have additional time prior to recess to have snacks before going out to play. These are monitored by the teachers to help support healthy habits.

WHAT DOES A TYPICAL SCHOOL DAY LOOK LIKE?

BELL TIMES

8.45AM

9.00AM

10.00AM

11.00AM

11.30PM

12:30 PM

1.30PM

2:30PM

3.30PM

3.45PM



11.30 am

The third learning session begins.

Students are guided back to the learning space to participate in either numeracy or inquiry-based activities.

WHAT DOES A TYPICAL SCHOOL DAY LOOK LIKE?

BELL TIMES

8.45AM

9.00AM

10.00AM

11.00AM

11.30PM

12:30 PM

1.30PM

2:30PM

3.30PM

3.45PM



12.30 pm

The fourth learning session
begins.

WHAT DOES A TYPICAL SCHOOL DAY LOOK LIKE?

BELL TIMES

8.45AM

9.00AM

10.00AM

11.00AM

11.30PM

12:30 PM

1.30PM

2:30PM

3.30PM

3.45PM



1.20 pm

Lunch-eating time

Foundation students make an earlier start to eat their lunches under the supervision of teachers. All students eat their lunch indoors

WHAT DOES A TYPICAL SCHOOL DAY LOOK LIKE?

BELL TIMES

8.45AM

9.00AM

10.00AM

11.00AM

11.30PM

12:30 PM

1.30PM

2:30PM

3.30PM

3.45PM



2.30 pm

The 5th learning session begins.

Students participate in some calming activities after lunch before undertaking tasks which promote collaborative, social and developmental play.

WHAT DOES A TYPICAL SCHOOL DAY LOOK LIKE?

BELL TIMES

8.45AM

9.00AM

10.00AM

11.00AM

11.30PM

12:30 PM

1.30PM

2:30PM

3.30PM

3.45PM



3.30 pm

Home Time!

Students are accompanied into the yard for parent pick-up or to after-school care.

Foundation students are collected from the big oval.

TheirCare staff will collect Foundation children from their classrooms, to ensure they arrive safely to their service after school.

WHAT DOES A TYPICAL SCHOOL DAY LOOK LIKE?

BELL TIMES

8.45AM

9.00AM

10.40AM

11.10AM

12.50PM

1.00PM

1.50PM

3.30PM

3.45PM



3.45 pm

Last Bell Warning

At this time we request that families leave the school grounds as after-care officially commences and teachers attend meetings. Any student not collected by this time is accompanied by the yard duty teacher to the office to contact parents.

WHAT DOES A TYPICAL SCHOOL DAY LOOK LIKE?



School Bells

These can be quite “alarming” at first.

If you are worried about your child’s response to the bell sound, consider talking about it soon with your child and with your child’s teacher.

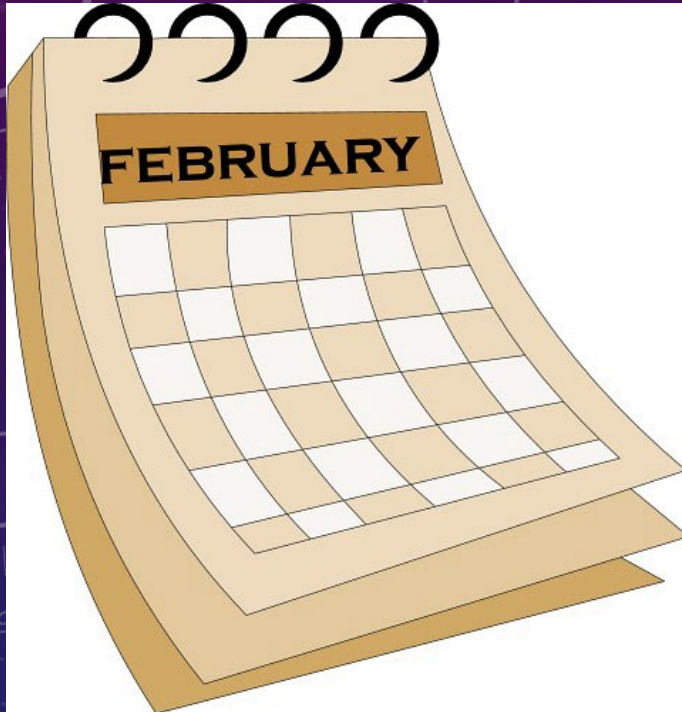
FOUNDATION STUDENTS
BEGIN SCHOOL ON
THURSDAY 1 FEBRUARY

FOR THIS DAY AND **FRIDAY 2
FEBRUARY**, FOUNDATION STUDENTS
ATTEND SCHOOL
9.15 AM-1:00 PM

FOUNDATION TIMES – THE FIRST WEEK



FOUNDATION TIMES – WEEK 2 UNTIL END OF FEBRUARY



FROM MONDAY 5 FEBRUARY UNTIL FRIDAY 23
FEBRUARY, FOUNDATION STUDENTS
ATTEND FULL HOURS EACH DAY EXCEPT
WEDNESDAYS.

WEDNESDAYS IN FEBRUARY ARE “REST DAYS”.

FROM MONDAY 26 FEBRUARY, FOUNDATION
STUDENTS ATTEND FULL HOURS EACH WEEKDAY.



Key dates in Foundation Term 1, 2024



	Date	Detail
Week 1	Tuesday 30 th January	Students attend only one of the days and times for their "Start-of-Year Assessment" and 'You Tell Us' booking. Bookings are made via www.schoolinterviews.com.au by entering the code _____ and then selecting either teacher.
	Wednesday 31 st January	The "Start-of-Year Assessment" is an assessment for your child to attend with one of the Foundation teachers. These assessments are an opportunity to get to know your child better and to tailor an individual learning plan, for a successful start to school. Students are dropped off at the Foundation area and then the parent/carer returns after 45 minutes to meet with the teacher for a 'You Tell Us' discussion where you are invited to share your expectations as well as your child's learning needs, interests and other matters influencing their educational and social development.
	Thursday 1 st February	Half-day attendance - 9:15 AM -1:00 PM Please send along a good snack for your child to enjoy.
	Friday 2 nd February	Half-day attendance - 9:15 AM - 1:00 PM Please send along a good snack for your child to enjoy.
Week 2	Monday 5 th February	Full days at school begin from 9:00 am – 3:30 pm, except for specific Wednesday 'Rest Days & Assessment Days' noted below.
	Wednesday 7 th February	Rest Day & Assessment Day – students do not attend school
Week 3	Wednesday 14 th February	Rest Day & Assessment Day – students do not attend school
Week 4	Tuesday 20 th February	Welcome Picnic @5pm
	Wednesday 21 st February	Rest Day & Assessment Day – students do not attend school
	Friday 23 rd February	Meet the Principal Team Morning Tea @9.15am
Week 5	Monday 26 th February	Students attend full time from now on – no more rest days
	Thursday 29 th February	Whole School Photo Day
Week 6	Friday 8 th March	Curriculum Day- No Students to Attend
Week 7	Monday 11 th March	Public Holiday – Labour Day
Week 8	Thursday 21 st March	Harmony Day
	Friday 22 nd March	Students attend their first whole school assembly
Week 9	Thursday 28 th March	Last day of Term 1 – Finish 2:30pm
	Friday 29 th March	Good Friday

2024 Term Dates

Term 1 - 29 January to 28 March

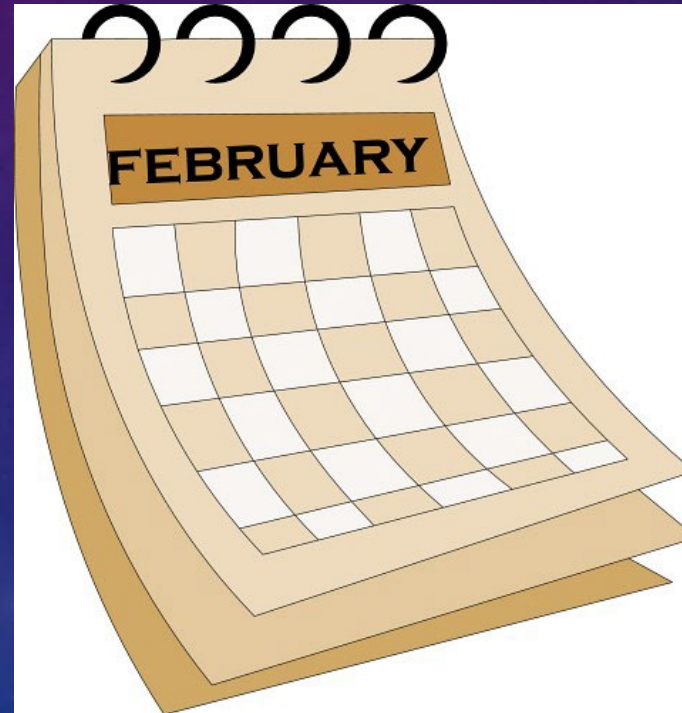
Term 3 - 15 July to 20 September

Term 2 – 15 April to 28 June

Term 4 - 7 October to 20 December

FOUNDATION TIMES – WEEK 2 UNTIL END OF FEBRUARY

Developmental
play occurs each
morning in
February.



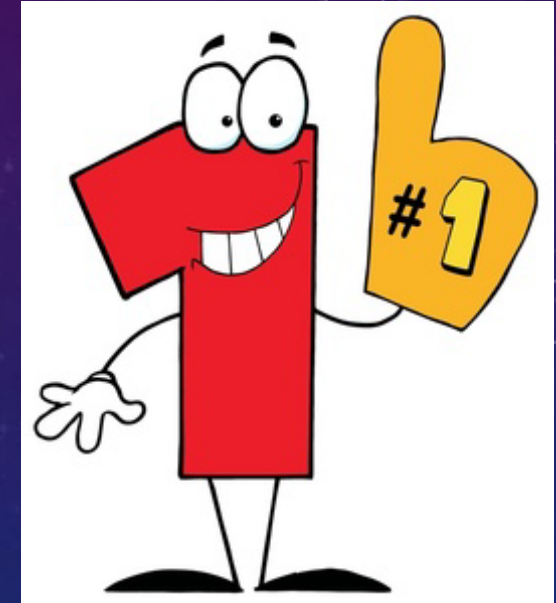
FOUNDATION – WHAT ARE THE WEDNESDAY “REST DAYS”?

YOU WILL BE INVITED TO SIGN UP FOR A LEARNING APPOINTMENT.

THIS APPOINTMENT IS ATTENDED BY YOUR CHILD TO UNDERTAKE IMPORTANT ASSESSMENTS TO GUIDE YOUR CHILD’S LEARNING.

THE APPOINTMENT CONCLUDES WITH THE OPPORTUNITY FOR YOU TO SHARE IMPORTANT INFORMATION WITH THE TEACHER WE CALL THESE ‘YOU TELL US’ MEETINGS





THE NUMBER 1 PIECE OF ADVICE FOR YOU!

UNIFORM

eduTHREADS

EASY ORDERING . SUPER FAST DELIVERY . FREE AND FAST EXCHANGE



Polo
\$17.50



Long Sleeve Polo
\$19.35



Gingham Dress
\$26.65



Tunic
\$43.55



House T-Shirt
\$11.95



Hooded Windcheater
\$33.80



Bomber Jacket
\$33.80



Polar Fleece Jacket
\$33.80



Poly Yoke Skort
\$25.60



Basic Short
\$18.45



Dbl Knee Track Pant
\$22.55



Zip Track Pant
\$22.55



Leisure Pant
\$21.50



Leggings
\$20.50



Cotton Nylon Tight
\$12.50



Slouch Hat
\$8.25



Polar Fleece Beanie
\$8.75



Polar Fleece Scarf
\$7.15



Primary Physiopak III
\$41.50



See your office or uniform facilitator to test and try on any item.

If you order the wrong size we offer **free & fast** exchanges so you can get the right fit.

JUMP ONLINE

WWW.EDUTHREADS.COM.AU

Name everything!

Pants

Tops

Hats

Lunchboxes

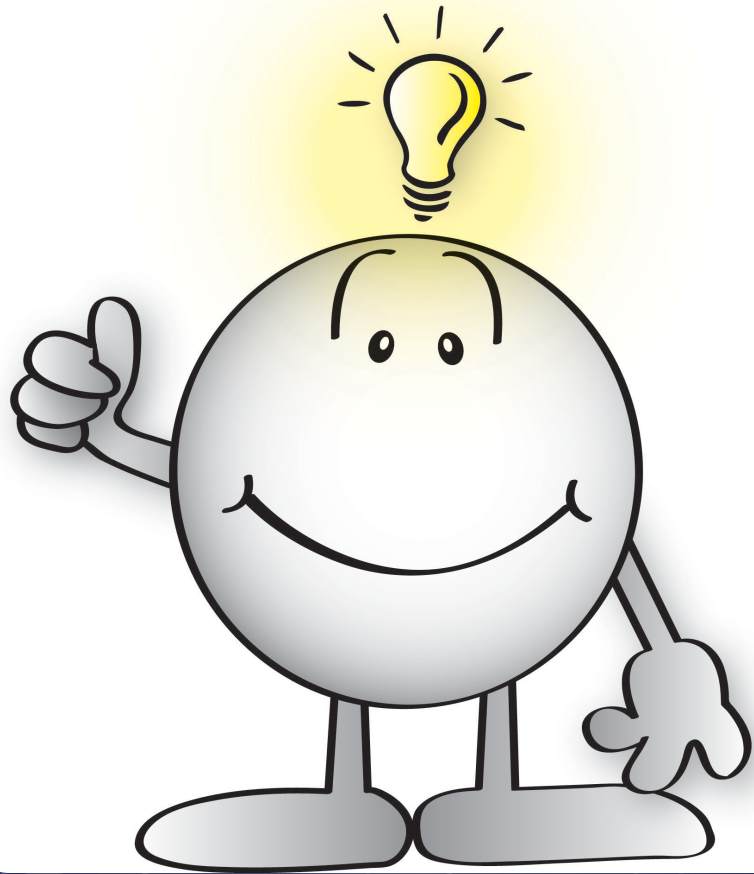
Helmets

Drink bottles

Bags

Scooters





SOME HANDY TIPS

HATS

- As a SunSmart school, your child will need to play in the shade from 1st September until end of April if they aren't wearing a hat.
- Label the hat so that not only we can identify whose it is, but also so that your child can!



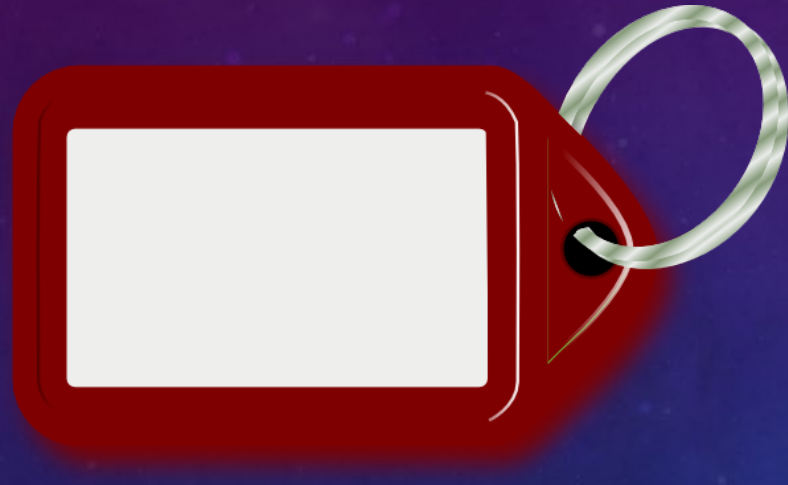
- ▶ We recommend the use of sunscreen. Please consider supplying your child with some and teach them how to apply it.

FOOTWEAR

- Footwear should have closed-toes and be comfortable for active participation in class and the schoolyard.



BAGS



- Put an identifiable key ring on your child's school bag so that it stands out from others.
- Pack your child's bag together.
- Encourage your child to carry their own school bag.
- Have a spare pair of undies & socks packed, just in case.



LUNCHBOXES & DRINK BOTTLES

- Supply water (rather than juice).
- Teach the difference between the little snack and the big lunch.
- Support our nude food initiative by avoiding wrapped items.
- Practise opening containers & compartments.
- Remind your child not to share their food.
- Pack an extra fruit snack – just in case!



TAKE HOME FOLDERS (BLUE SATCHELS)

- The blue satchel is brought to school every day and is used to hold 1-2 books to read at home.
- It also conveys the reading diary (where parents/carers record what their child has read at home and how they went; checked weekly).
- The satchel helps protect books & diaries from food and drink.

OTHER ITEMS...

- There is no need to send personal stationery items – we share our equipment.
 - We discourage the bringing of toys to school which can be lost or damaged or lead to friendship issues.
 - No need to bring sports equipment – each class has their own set.
 - Any personal items should be named!
- ▶ Electronic/expensive items are strongly discouraged.
 - ▶ Phones (and similar smart devices) should not be brought to school.





ALLERGIES & MEDICAL NEEDS

- If your child has allergies or other medical needs, please ensure the school is informed.
- We are not a nut-free school but we do ensure that good hygiene practices are adopted and that certain foods (like yoghurt) are not shared in the yard or near students with allergies.
- We ask that students do not share food.
- *COVID restrictions mean that we must be very vigilant and ensure that anyone with COVID-like symptoms, does not attend school.*

ILLNESS AND INJURY

- Our staff are all First Aid trained.
- If a student becomes ill at school, we will contact parents/carers for early collection.



Please do not send your child to school if unwell.
(Some illnesses have exclusion periods – please check if unsure.)

If your child has an injury above the neck, you will be contacted, despite the severity.

We do not cover additional costs incurred for medical reasons (e.g., ambulance).

SELF-CARE



- Support your child to know how/when to wash hands with soap and water. Please ensure that you help your child the importance of washing for 20 seconds.
- Teach your child how to blow their nose. (A personal supply of tissues in their bag is a good idea!)
- Please let your teacher know if they experience difficulties with self-care (e.g., toileting).

SLEEP & REST

- School is tiring! Please ensure your child is getting enough sleep.
- Do not be surprised if your child is tired at the end of the school day. Let them rest!



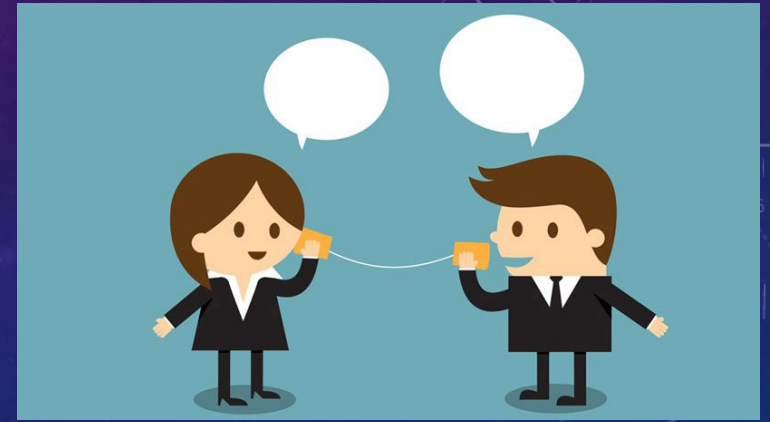
BUDDIES



- Foundation students are paired with a 'buddy' from Years 5/6.
- They will get to meet their buddies next year .
- 5/6 buddies help our newest members of the community settle into school.
- Throughout the year, buddies participate in activities like reading, maths games, PMP and positive social interactions in the playground.

COMMUNICATION

- ▶ Urgent communication should go through the school office.
- ▶ Drop-off time and learning times are not suitable for detailed communication.
- ▶ For more complex student issues, please make an appointment with the Assistant Principal or Principal.
- Teachers are always happy to talk with parents but need notice to discuss their child's learning and/or social issues in detail.
- Parents are provided with the teacher's email address; emails will be responded to within 48 hours.
- The Reading Diary can also be used for communication.



MEETINGS WITH OUR TEACHERS

- Teachers are available to meet with families but via AN appointment. This can be made by contacting the teacher via email.
- Teachers are not available on the following days as they have a commitment to ongoing professional learning, morning staff briefings and after-school meetings.
 - Tuesdays and Thursdays Staff Briefings @ 8:30-8:45
 - Tuesdays (3:45 to 4:45 pm) Professional Learning
 - Wednesdays (3:45 -4:45 pm) Staff/PLT's/Sub School Meetings



ASSEMBLY

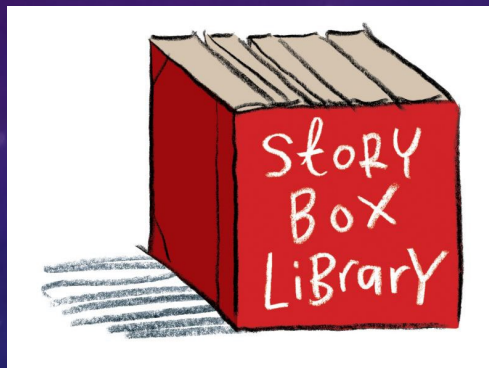
- We have an assembly most weeks on a Friday afternoon. Assembly times are advertised in the school newsletter and on the COMPASS Calendar.
- Assemblies are ordinarily held in the Barrbunin at 3:00 pm and provide the school community with the opportunity to all come together to celebrate the week and promote upcoming activities.





COMPASS AND QKR!

A SNEAK PEAK AT STARTING SCHOOL!



QUESTIONS?

